



Community Engagement

April 19, 2021



Welcome

Jacqueline Naeem
Project Director



KEY ELEMENTS OF ACH

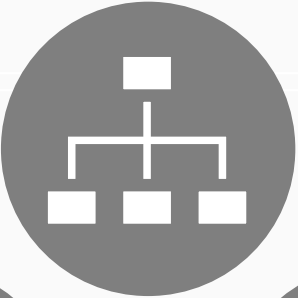
Backbone Organization



Community Engagement



Governance Structure



Aligned Vision & Goals



Shared Accountability



Sustainable Funding



Business Case & ROI



Continuous Learning



Shared Data System



Policy & Systems Change

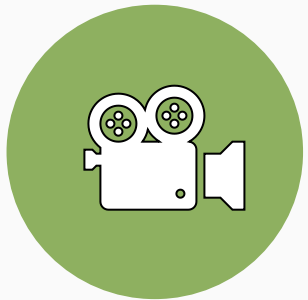
RULES OF ENGAGEMENT



Chat function available to submit responses



Please remain on mute if not speaking



Session will be recorded

Today's Presenters



Lisa Madry

Director of Community Engagement
Episcopal Health Foundation



Tanya James

Community Partnerships Officer
Episcopal Health Foundation



Troy Bush-DiDonato

Community Engagement Officer
Episcopal Health Foundation

VISION: HEALTHY COMMUNITIES FOR ALL

GOALS

STRENGTHEN SYSTEMS OF HEALTH

by catalyzing health systems to be accessible, equitable and deliver health, not just healthcare

ACTIVATE COMMUNITIES

by strengthening organizations and congregations to build health-promoting communities

BUILD THE FOUNDATION FOR A HEALTHY LIFE

by investing in early childhood brain development

TARGETED OUTCOMES

Resource allocation and system reform in the health sector reflect the goal of improving health, not just healthcare

Low-income and vulnerable populations access comprehensive care in their communities

Community and congregation members actively shape healthy communities and influence health systems to improve health equity

Health systems and families implement best practices for early childhood brain development during pregnancy and the first 1,000 days of life

STRATEGIES

SUPPORT CHANGE IN HEALTHCARE FINANCING

WORK UPSTREAM

SUPPORT COMPREHENSIVE CLINICS

STRENGTHEN RURAL HEALTH

EXPAND HEALTH COVERAGE & BENEFITS

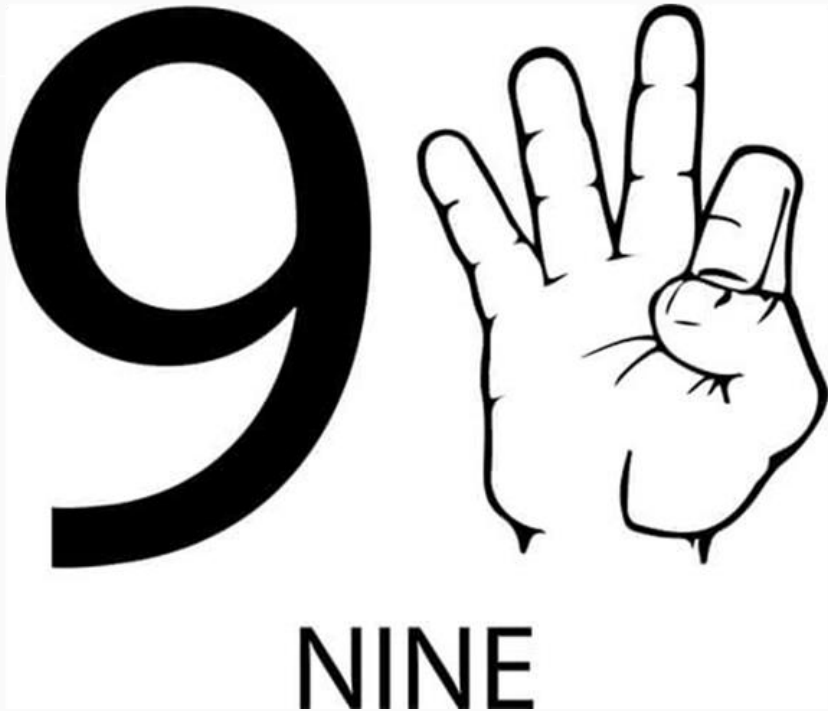
RAISE COMMUNITY VOICES

SUPPORT CONGREGATIONS IN ACTION

BUILD BRAIN DEVELOPMENT - PROVIDERS

BUILD BRAIN DEVELOPMENT - COMMUNITY ORGANIZATIONS

PRINCIPLES OF COMMUNITY ENGAGEMENT



“How can we make certain that we do not follow the principles, so that our communities are not fully engaged?”

-Break them now in a safe place!

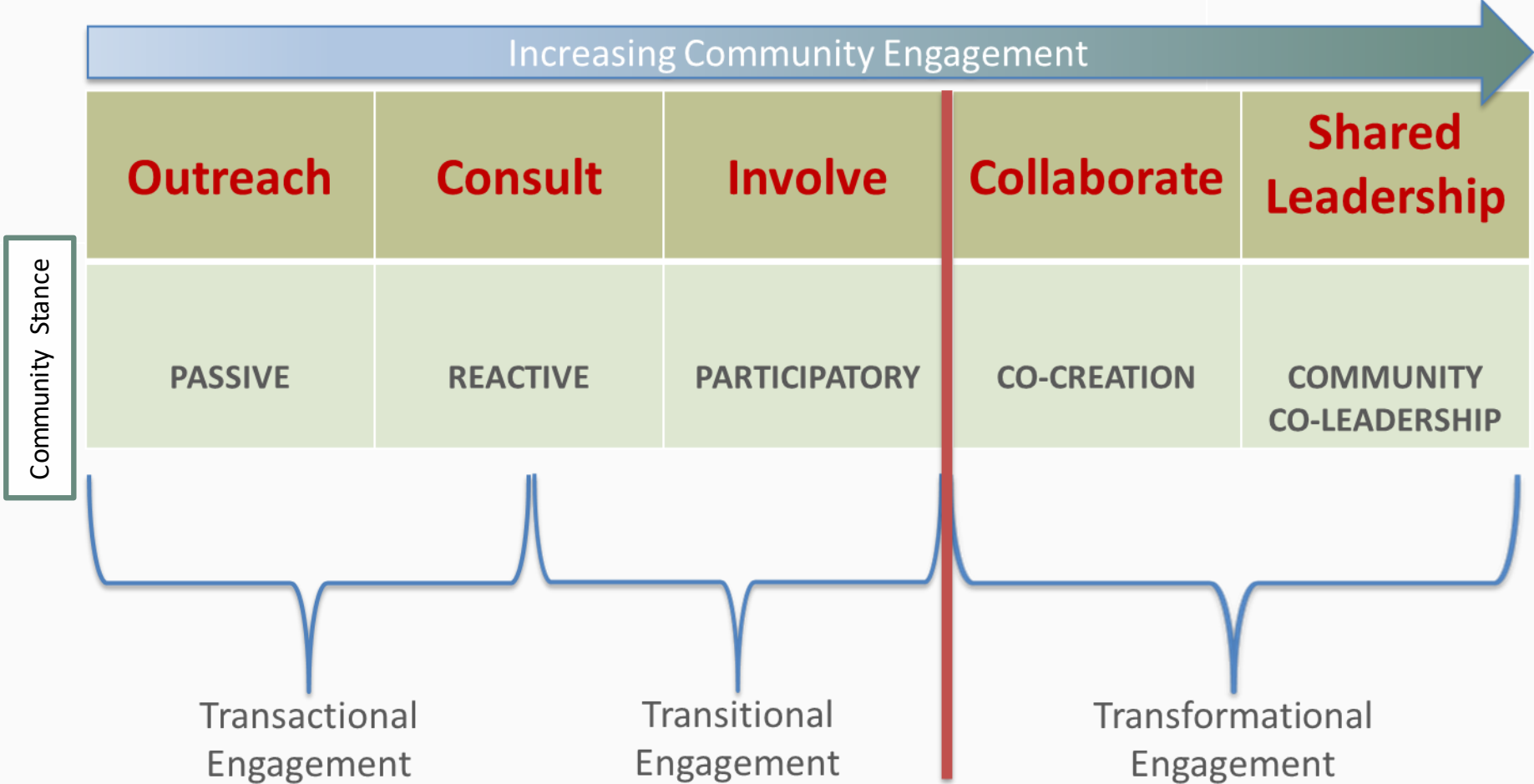
HOMEWORK DISCUSSION

If my organization/institution were to plot our current community engagement effort on the continuum of community engagement it would be at what level?

-How do we know it is at this level?



COMMUNITY ENGAGEMENT CONTINUUM



Modified from Hashagan, S.: 2002, Models of Community Engagement (Scottish Community Development Centre, Scotland).



PRACTICE SESSION

Groups 1-4 **1. Informed Decision-Making-** Funding source strongly encourages participatory decision-making? How might you obtain community input and structure decision-making processes?

Groups 5-8 **2. Building Trust-** You are working a community that is racially divided and resources have not been distributed equitable. How would you approach community engagement in a way that begins to address this divide?

Groups 9-12 **3. Coordination and Duplication of Effort-** Several agencies have recently launched programs and are competing for funding within a small rural community to address opioid crisis and increase death rates and overdoses. How might you engage the community to provide feedback on the extent their needs are being met, to better coordinate all these programs?

Groups 13-16 **4. Power Dynamics-** Large Backbone Organization well-funded and staffed convenes partners to address a social determinants. How might you ensure residents get an equitable voice at the table?

Groups 17-20 **5. Developing Mission and Vision-** A small rural community has been identified and engaged to participate in an ACH collaborative. How might you engage the residents in creating a community visioning process?

Let us help!

UPCOMING DATES / IMPORTANT INFORMATION



Now: Complete April's *Community Engagement* curriculum and start reviewing the Implementation Workplan documents.



May: May's topic is *Developing an Intervention Portfolio*.



May 17: Next Knowledge-Sharing Forum. We recommend that the homework for May be completed as an ACH team.