

CALIFORNIA ACCOUNTABLE COMMUNITIES FOR HEALTH INITIATIVE



---

..The Next Generation of Health System Transformation

# BACKBONE WEBINAR: PORTFOLIO OF INTERVENTIONS (POI) TOOL KIT

May 26, 2020

CALIFORNIA ACCOUNTABLE COMMUNITIES FOR HEALTH INITIATIVE



...The Next Generation of Health System Transformation

**WELCOME & CHECK-IN**

**Barbara Masters**  
**CACHI Program Management Team**

# ACH Communities

- Fresno County
- Humboldt County
- Imperial County
- Lake County
- Los Angeles County
  - Boyle Heights
  - Long beach
  - San Gabriel Valley
- Merced County
- Sacramento County
- San Diego County
- San Joaquin County
- Santa Clara County
- Sonoma County



CALIFORNIA ACCOUNTABLE COMMUNITIES FOR HEALTH INITIATIVE



---

...The Next Generation of Health System Transformation

## **POI Tool Kit Orientation**

**Karen Linkins and Jennifer Brya**  
**Desert Vista Consulting**



# CACHI Portfolio of Interventions Toolkit Orientation

Karen W. Linkins, PhD

Jennifer Brya, MA, MPP



## Today's Goals:

---

Introduce the POI toolkit

---

Role of the POI in the ACH

---

Guiding Principles to Keep in Mind

---

Toolkit Building Blocks

---

Example Sections

---

Recap & Questions

# Purpose of the Toolkit

- Resource to help sites across various stages of POI development, implementation, and refinement
- Provide a framework and concrete strategies for ACHs to develop, implement, and refine a POI that reflects and responds to community needs and priorities.
- Provide an actionable process for planning, implementing, and refining interventions to address specific population health related issues targeted by communities.

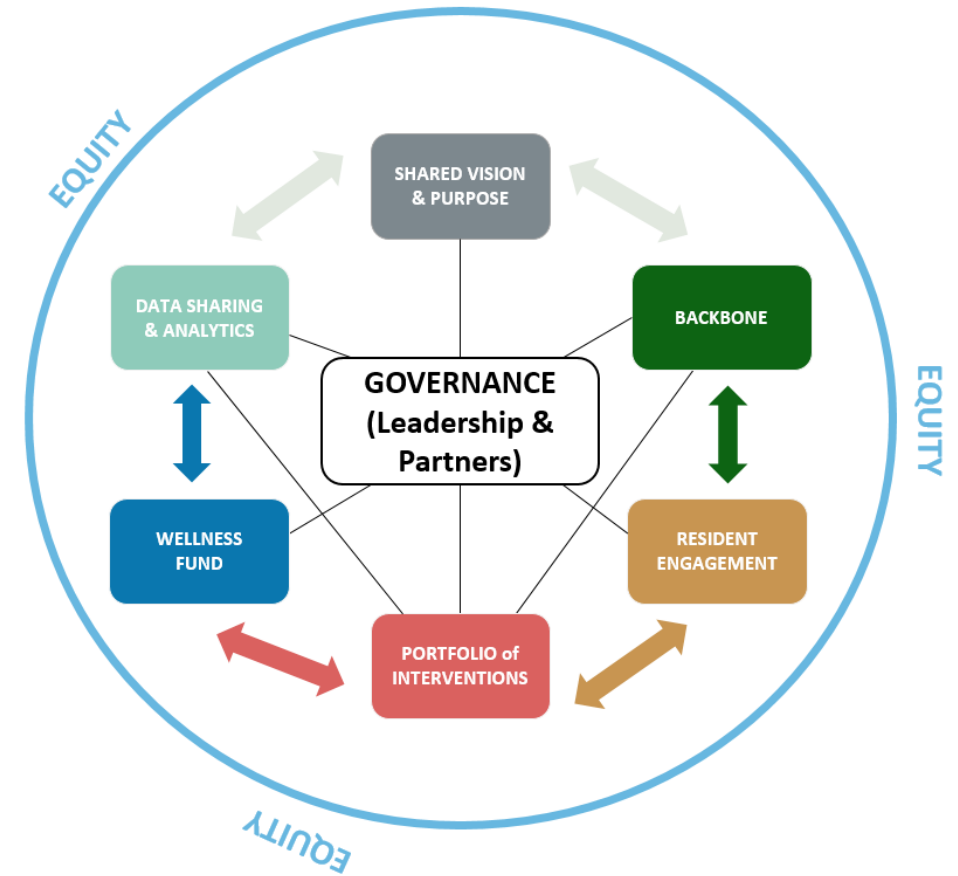
# What's Inside the Toolkit?

- Conceptual framework of POI in the CACHI model
- POI Building Blocks
- Each building block section contains:
  - Building block description
  - Development guidelines
  - Questions for reflection
  - Associated tools
  - Example from an existing ACH
- Final section on assessing the POI strength: How do you know your POI will transform your system?

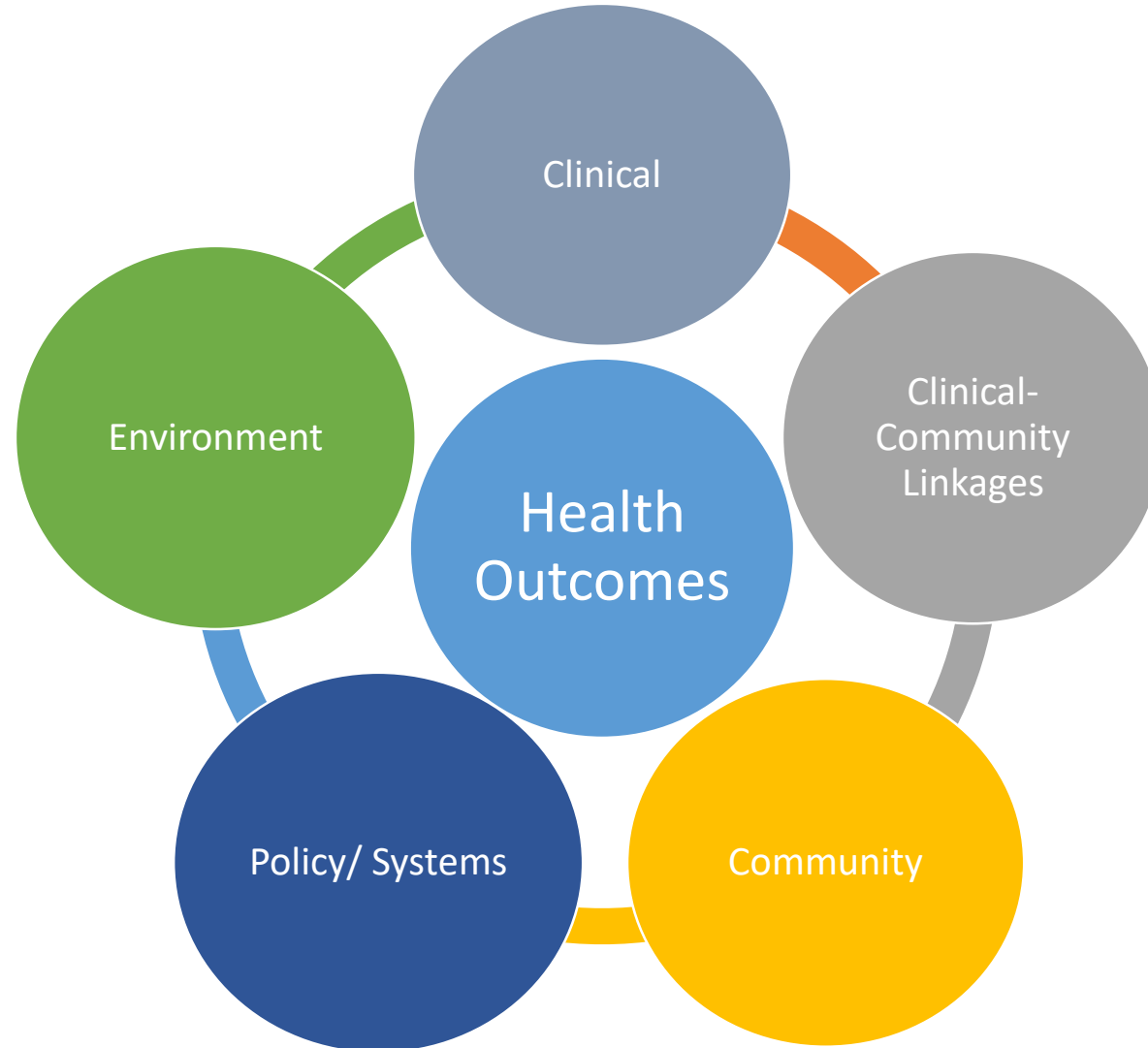


# POI: Engine for Change

- POI is one of the seven core ACH model elements engaging systems, the community, and residents to identify, develop, and implement interventions and activities to achieve the ACH's vision.
- Elements of the POI already exist, but in silos without sufficient coordination to significantly improve population health.
- POI more intentionally and strategically links and aligns activities and addresses gaps across organizations and sectors.
- POI is the ACH engine where partners work together to “do business differently” and transform the systems and community conditions that negatively impact population health.

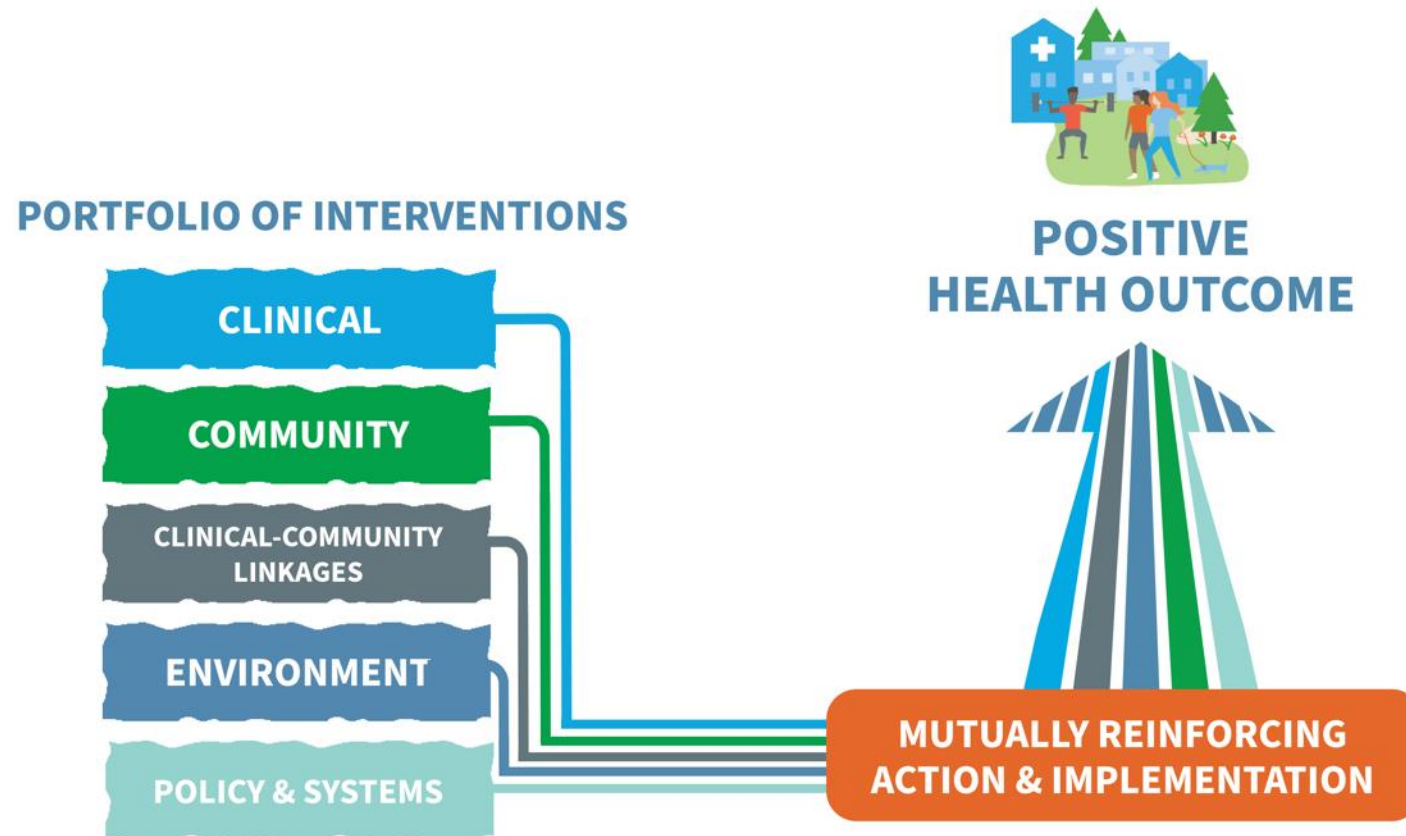


# CACHI Portfolio of Interventions: 5 Domains



**LINKED AND  
MUTUALLY  
REINFORCING**

# Mutually Reinforcing through Implementation



## Guiding Principles to Keep in Mind

<b>Clear Vision and Understanding of Community Health and Equity Priorities</b>	What are the community's long-term goals and problems that need to be addressed? What needs to be changed to achieve greater equity?
<b>Move from "Business as Usual"</b>	Identify and consider a range of interventions to address community priorities and clarify how current practices and workflows need to change
<b>Interventions &amp; activities of the POI already exist</b>	Keep in mind that the makings of your POI already exist in the community, among your partners and others who need to be identified. Consider leveraging and scaling up what already exists (partners, programs, and resources).
<b>Leverage existing motivation, passion, and will</b>	Start where there is motivation, passion, and will among residents and partners. Who is at the table? Who is in a position to contribute and catalyze the work to move forward?
<b>Include a balanced mix of interventions and activities</b>	Evidence-based practices and activities within the POI are important, but not at the exclusion of field-generated practices that are effective and have value in the community. Similarly, include a mix of interventions with short-term early wins and long term impacts.
<b>POI structure and interventions/activities provide the basis for collaborative action and change</b>	Keep in mind that if successful, the ACH will be a lasting platform for collaborative action and driver of change in the community. The target condition or problem being solved may change, but the POI structure and development approach will be consistent as the ACH evolves.

## **Portfolio of Interventions Building Blocks**

**Identify and Define the Problem or Condition to Address**

**Develop Clear Goals and Outcomes to Drive ACH Work**

**Inventory Existing Programs, Activities, and Interventions to Leverage & Identify Gaps**

**Create the Portfolio with Interventions & Activities Organized into the 5 Domains**

**Implement the POI with a Mutually Reinforcing Plan of Action**

**Monitor Progress and Refine POI as Needed to Reflect Community Priorities**

Building Block:  
Create an  
inventory of  
existing programs,  
activities, and  
interventions that  
can be leveraged  
for the POI.

- Creating a comprehensive inventory of existing programs/ interventions is not something the backbone organization can do on its own. This task requires engagement and input from a multitude of partners.



# Guidelines

- Creating an inventory is a strategy to help you develop a POI. The inventory allows you to see and understand what already exists in your community and where there are gaps across the five POI Domains.
- Don't get stuck at compiling the inventory. It doesn't have to be perfect and it does not need to extend beyond a few focused meetings with diverse stakeholders.
- POI development doesn't need to be complicated — start with a 1 or 2 interventions in each of the 5 POI Domains, if possible.
- In many ways, the POI already exists in your community —there are many clinical and community programs and interventions being implemented, the ACH POI is about alignment and intention to leverage the work for a common goal.
- The POI can evolve, is never “finished,” and can change and expand over time as more partners engage in the ACH and align their work.
- Mapping existing interventions to the outcomes you prioritized for your ACH ensures the POI will help achieve your vision. *Keep in mind, each strategy/intervention can map on to multiple outcomes.*

# Questions for Reflection (Leadership Team)

- Can we develop a small workgroup of ACH partners to assist in compiling potential interventions for the POI?
- What, if any, existing programs/initiatives align or contribute to the priority outcomes that are currently under the purview of the backbone? This question is meant for *backbone organizations that provide direct services or implement programs*.
- Who are our strongest partners at the table? What programs and interventions are they implementing or funding that can be aligned under the POI?
- How much time do we want to allocate for creating an initial inventory of interventions, activities, and programs? *Keep in mind the POI is iterative and you can refine it over time.*
- How and to what extent have we involved community members in this building block?



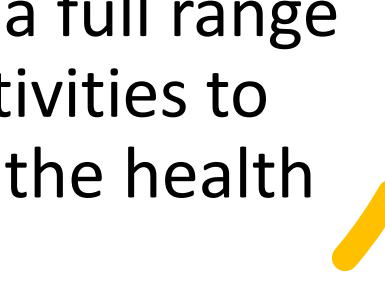
# Building Block Outcome

ACH creates an inventory of interventions, programs and activities sorted across the five POI domains.

Featured Tools:

1. POI Sample Map of Intended Outcomes (string exercise)]
2. San Diego inventory survey

# Building Block: Create your Portfolio of Interventions

- A well-balanced portfolio is responsive to community needs and includes a mix of interventions, activities, and programs spanning five domains.
  - Organizing interventions under the domains provides a structured process to analyze the inventory, align and coordinate interventions for greater impact, and identify potential gaps.
  - Interventions should encompass a full range of upstream and downstream activities to address all stages and aspects of the health issue.
- 

# Guidelines

- Map specific programs/interventions identified through the inventory process to the five POI domains.
- Develop prioritization criteria to narrow down the potential interventions to be included in the POI, e.g.:
  - Already being implemented by backbone or other ACH organizational partners
  - Able to reduce health inequities
  - Addressing a critical need or gap, particularly as identified by residents
  - Already being implemented with clear relevance and impact on our intermediate or long-term goal (system and population level)
  - Grounded in what works based on research or practical evidence
  - With clear, measurable outcomes
- Review the inventory against the prioritization criteria to assess strength of alignment for inclusion.
- Ensure POI interventions map to long-term outcomes and are not just backbone activities associated with implementing other ACH components (e.g., establishing the WF is not a strategy in the POI).
- POI will include Evidence Based Practices, system level activities, capacity building efforts, and field-generated interventions to represent interests of a wide range of diverse community partners.

# Questions for Reflection (Leadership Team)

- What criteria do we want to use to narrow the list of potential interventions to make the POI more focused and manageable given resources?
- Do we have a designated workgroup we can assign this task for leadership team/backbone review?
- Are the interventions addressing the ACH's goals and priority outcomes, and advancing equity?
- Does the overall set of interventions seem sufficient to achieve a measurable change? Is it so broad that the partners cannot launch and sustain the POI?
- What new programs or interventions are needed to ensure the POI will achieve the outcomes? Will it reach various sub-populations?
- Does the POI have interventions aimed at both population health improvement and systems/policy change?
- Do we have at least one intervention in each of the five POI Domains?
- To what extent are ACH activities addressing prevention and treatment focused components? (POI balance/composition)

# Building Block Outcome

ACH has prioritized the list of interventions identified in the inventory to establish a working POI.

Featured Tools:

Criteria for POI selection from East San Jose and Sonoma

# POI Process Recap



**IDENTIFY PROBLEM**



**CREATE INVENTORY**



**DEVELOP GOALS**



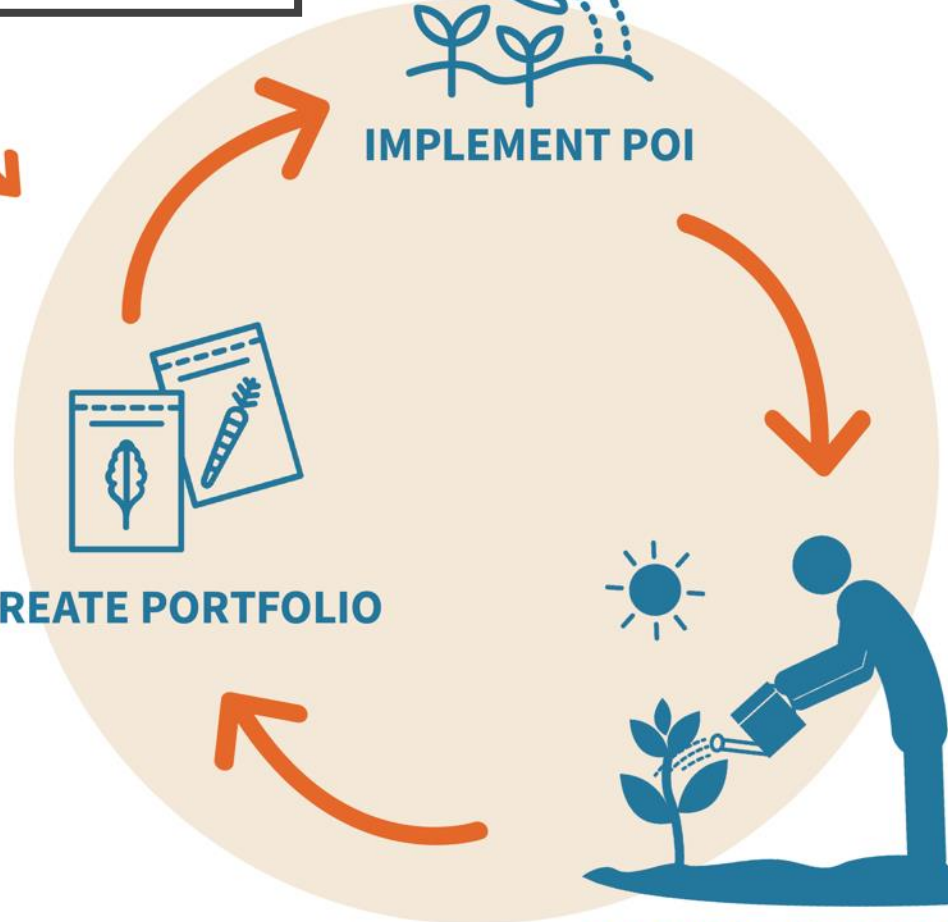
**CREATE PORTFOLIO**



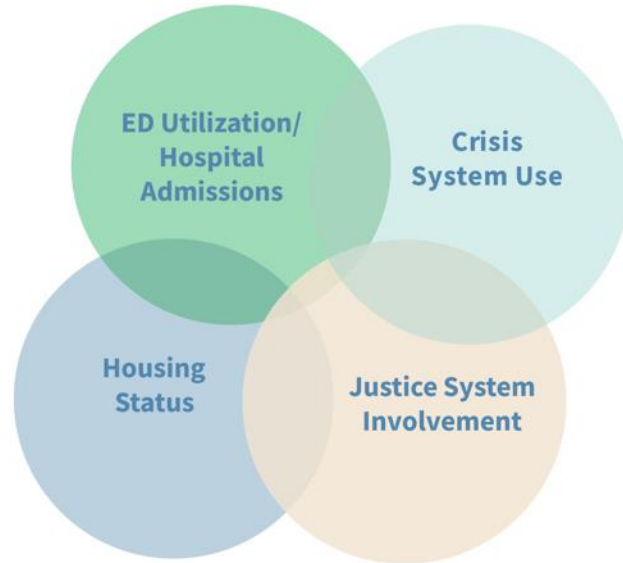
**IMPLEMENT POI**



**MONITOR & REFINE**



# Assessing the Strength of Your Portfolio: How do you know your POI will transform your system?



- Connected Vision and Definition of the Problem
- Connected Root Causes
- Connected Outcomes
- Connected Activities
- Connected in Reach, Spread, & Sustainability



Questions





## POI WEBINAR & SURVEY INSTRUCTIONS

On the webinar, Karen Linkins will orient you to the tool kit in preparation for further discussion of the POI at the backbone convening on June 4. To that end, we would like you to fill out a short five-min POI Survey at the end of the webinar. This will help us learn more concretely about what stage(s) you are at and where you are being challenged. Please complete the post-webinar survey [HERE](#).

**If you are unable to attend the webinar today, PLEASE make sure to listen to the webinar recording AND return the survey by the end of the week.**

- **Please complete the post-webinar survey by Friday, May 29, 2020**
- [https://www.surveymonkey.com/r/CACHI\\_POI\\_Survey](https://www.surveymonkey.com/r/CACHI_POI_Survey)

CALIFORNIA ACCOUNTABLE COMMUNITIES FOR HEALTH INITIATIVE



...The Next Generation of Health System Transformation

**THANK YOU FOR PARTICIPATING**

**Please complete the post-webinar survey by Friday, May 29, 2020**

**[https://www.surveymonkey.com/r/CACHI\\_POI\\_Survey](https://www.surveymonkey.com/r/CACHI_POI_Survey)**